

**Worship in Song**

**Announcements & Greetings**

**Children's Moment**

**Worship in Tithes**

**Doxology**

**Worship in Song**

**Worship in The Lord's Supper**

**Worship in Reading of the Word**

John 5:30-47

**Worship in Teaching**

***Witnesses of Christ***

John 5:30-47

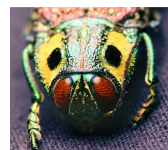
**Pastor Bill Butler**

**Worship in Song**

**CBC Annual Business Meeting**



**Can There Be Design Without a Designer?**



*For the invisible things of him from the creation of the world are clearly seen, being understood by the things that are made, even his eternal power and Godhead...—Romans 1:20a*

A new science called biomimetics is making news. In the past we have talked about how some of man's designs are often similar to God's which do the same job. However, in biomimetics, researchers actively seek to study the creation to learn of designs that will solve engineering problems.

We are all familiar with the story of how thistle seeds inspired Velcro. Engineers have used the design of the owl's wing to make the structures that carry electrical current to trains. The result is a much quieter ride. The moth's eyes' ability not to reflect light helps make it harder to be spotted by birds. The same design has now been used to make a nonreflective film. The result is a film that can be used to help prevent windows from reflecting light. This film will soon be available commercially. Many dyes are toxic, yet many creatures manage to show off bright colors without using toxic substances. Materials engineers studied how the jewel beetle produces its color. The result is a film that seems to change color depending on the angle from which you view it.

No scientist can offer a rational explanation for how so many thoughtful and efficient designs could be generated in a mindless universe. These designs are fingerprints God left all over the creation so that man might seek Him out.

**Prayer:** I thank and praise You, dear Father, for the excellence and wonder You have left as fingerprints in the creation. Amen.

**Ref:** *Nikkei Weekly*, 2/22/10, p. 17, "Biomimetics yields life-inspired products." Photo: Jewel beetle. Courtesy of Debivort. Licensed under the terms of the GNU General Public License.

CREATION MOMENTS, INC.

P. O. Box 839 • Foley, MN 56329 • 800-422-4253

To receive our free Today's Creation Moment e-mail, visit [www.creationmoments.com](http://www.creationmoments.com).

## **Upcoming Schedule:**

Mon. 11/18: 5:30-7:00 pm @ Burger Boy  
**The Pastor Is In**

Wed. 11/20: All at Mountain Christian Church:  
5:30-6:30 pm **Music Practice**  
6:30-7:00 pm **Bring Your Own Meal**  
7:00-8:30 pm **Bible Study—Daniel**

Thurs. 11/21: 1:30-3:00 pm @ Kristine's home, 17 Eastside Loop,  
Sandia Park, ph. (505) 286-7504  
**Women's Fellowship – coffee & cookies served**

Sat. 11/23: 8:30-10:00 am at Burger Boy  
**Men's Devotion & Breakfast**

Sun. 11/24: 10:00 am @ Los Vecinos Comm. Center "Upper Room"  
**Sunday Service & Community Meal**  
Bring a guest!

## **Announcements:**

- **Happy Birthday to Davra** on Nov. 21.
- **Happy Birthday to Olivia** on Nov. 23.



**CANYON BIBLE CHURCH**

PO Box 1674, Tijeras, NM 87059-1674

[www.canyonbible.org](http://www.canyonbible.org)

Pastor Bill Butler (505) 228-2609 † [Bill@CanyonBible.org](mailto:Bill@CanyonBible.org)

Pastor Rick Mitchell (505) 221-0163 † [Rick@CanyonBible.org](mailto:Rick@CanyonBible.org)